

Dimensions

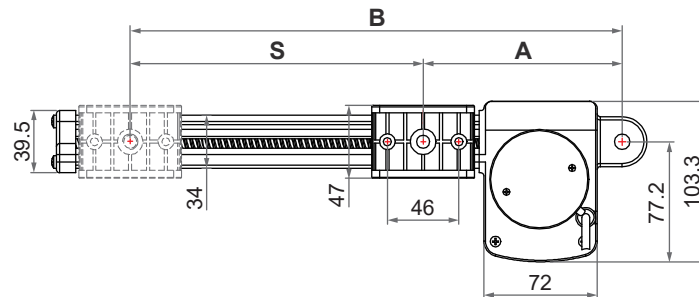
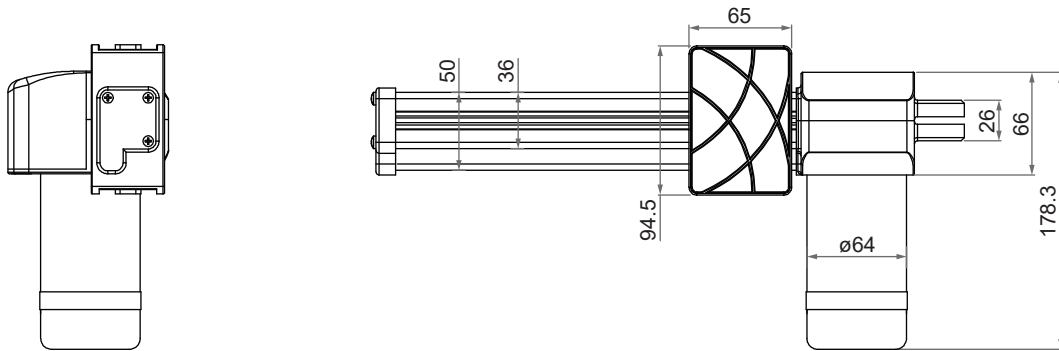
Retracted length (A) = 127mm Min. (± 3 mm)

Available stroke (S) range = 100 ~ 1000mm

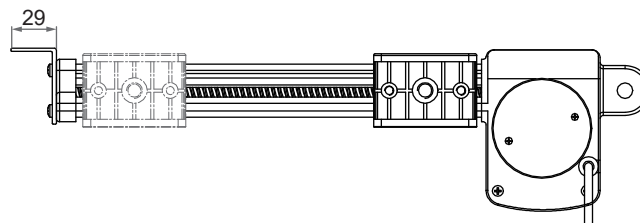
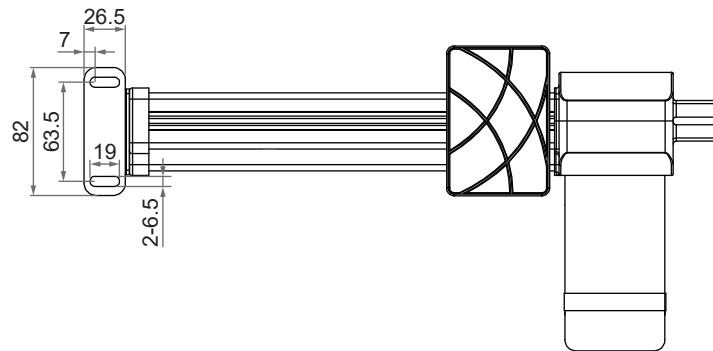
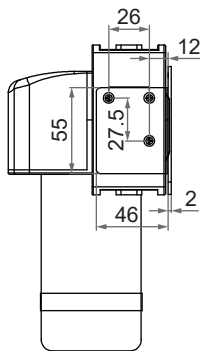
Extended length (B) = Retracted length (A) + Stroke (S)

Drawing

- Standard

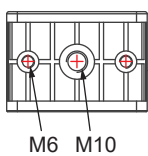


- With mounting bracket (Option)



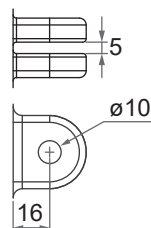
- Front connector

1: Plastic slider block



- Rear connector

1: Plastic

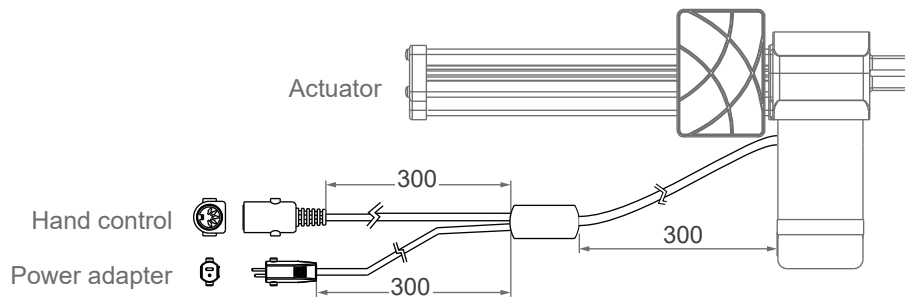


Unit: mm

B. Connecting control devices that DO NOT provide power

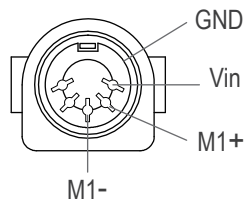
1. Cable solution

- With direct-cut power cable DL1



2. Hand control connector: Moteck U-type DIN 5-pin female connector

- 1 drive

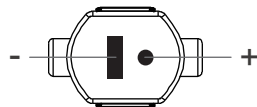


Note: Connect M1+ to "Vdc +" & M1- to "Vdc -" of DC power to extend the M1 actuator.
Switch the polarity of DC input to retract it.



U-type female connector

3. Power connector: Moteck S-type DIN 41529 2-pin male plug



S-type male plug

Ordering Key

	96□ - 24 - A6 - 135 . 113 - C 1 1 - HS2 - BK - 1
Input voltage	12: 12V DC 24: 24V DC
Motor and Spindle type	A4: 2500rpm / 4mm pitch A6: 2500rpm / 6mm pitch A8: 2500rpm / 8mm pitch AG: 2500rpm / 16mm pitch KG: 2500rpm / 16mm pitch F4: 3300rpm / 4mm pitch F8: 3300rpm / 8mm pitch
Retracted length (Refer to Page 3)	XXX
Extended length (Refer to Page 3)	XXX
Front connector (Refer to Page 3)	1: Plastic slider block
Rear connector (Refer to Page 3)	1: Plastic
Positioning feedback	Blank: None HS1: Hall effect sensor x 1 HS2: Hall effect sensor x 2
Option (Multiple choice is allowed)	Blank: None BK: Mechanical brake L: Mounting bracket
Cable	0: 300mm straight 1: 1000mm straight 2: 450mm with 300mm coiled A: Direct-cut power cable DL1 (Refer to Page 6)