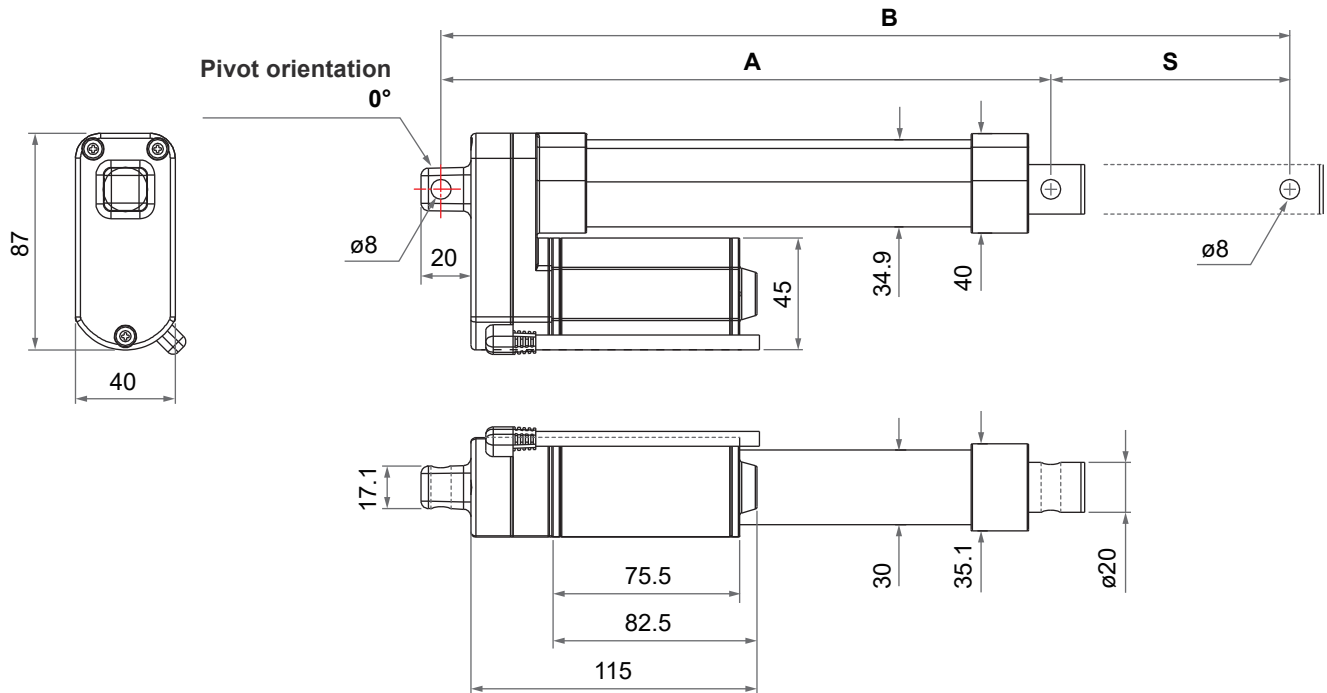


Dimensions

• Retracted length (A)

Front connector code	Stroke (S)		
	$\leq 200\text{mm}$	201~250mm	251~300mm
2, 4	$A \geq S+115\text{mm} (\pm 3\text{mm})$	$A \geq S+125\text{mm} (\pm 3\text{mm})$	$A \geq S+135\text{mm} (\pm 3\text{mm})$
3, 6	$A \geq S+130\text{mm} (\pm 3\text{mm})$	$A \geq S+140\text{mm} (\pm 3\text{mm})$	$A \geq S+150\text{mm} (\pm 3\text{mm})$

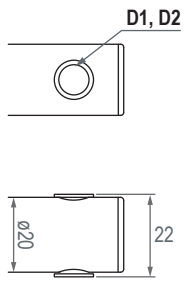
- Available stroke (S) range = 50 ~ 300mm
- Extended length (B) = S + A



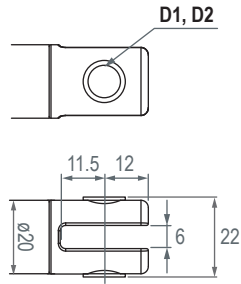
Note: As an example in 0° orientation for rear connector.

● Front connector

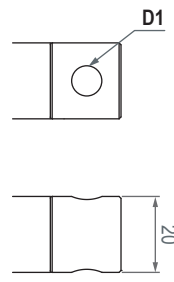
2: Drilled hole



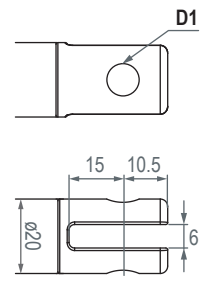
3: Metal slot



4: Plastic solid



6: Plastic slot



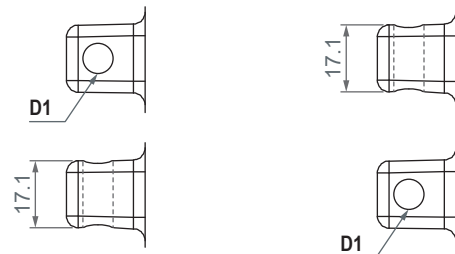
Front connector code	Diameter of pivot without bushing (D1)	Diameter of pivot with bushing (D2)
2	ø8, ø10	ø8
3	ø8, ø10	ø8
4	ø8, ø10	N/A
6	ø8, ø10	N/A

● Pivot orientation of rear connector

2: Metal

0 : 0° (standard)

9 : 90°




Rear connector code	Diameter of pivot without bushing (D1)	Diameter of pivot with bushing (D2)
2	ø8	N/A

Cable with Flying Leads

Without positioning feedback

	Wire color	Definition	Comments
Power wires	Blue	DC power	Connect blue wire to "Vdc +" & brown wire to "Vdc -" of DC power to extend the actuator. Switch the polarity of DC input to retract it.
	Brown		

With dual Hall effect sensors for positioning

	Wire color	Definition	Comments																				
Power wires	Blue	DC power	Connect blue wire to "Vdc +" & brown wire to "Vdc -" of DC power to extend the actuator. Switch the polarity of DC input to retract it.																				
	Brown																						
Signal wires	Yellow	Vin	Voltage input range: 5 ~ 20V																				
	Red	Hall 1 output	High= Input - 1.2V ($\pm 0.6V$) Low= GND Hall signal data:  <p style="text-align: center;">Actuator extends Actuator retracts</p>																				
	Green	Hall 2 output	Hall effect sensor resolution: <table border="1" style="width: 100%; border-collapse: collapse;"> <thead> <tr> <th>Model No.</th> <th>Resolution (pulses/mm)</th> </tr> </thead> <tbody> <tr> <td>116□ -24-F4-XXX.XXX-XXXHX0X</td> <td>10</td> </tr> <tr> <td>116□ -24-F8-XXX.XXX-XXXHX0X</td> <td>5</td> </tr> <tr> <td>116□ -24-FC-XXX.XXX-XXXHX0X</td> <td>3.3</td> </tr> <tr> <td>116□ -24-R4-XXX.XXX-XXXHX0X</td> <td>10</td> </tr> <tr> <td>01NS10-24-R8-XXX.XXX-XXXHX0X</td> <td>5</td> </tr> <tr> <td>01NS10-24-RC-XXX.XXX-XXXHX0X</td> <td>3.3</td> </tr> <tr> <td>01NS10-24-L8-XXX.XXX-XXXHX0X</td> <td>5</td> </tr> <tr> <td>01NS10-24-LC-XXX.XXX-XXXHX0X</td> <td>3.3</td> </tr> <tr> <td>116□ -24-LG-XXX.XXX-XXXHX0X</td> <td>2.5</td> </tr> </tbody> </table>	Model No.	Resolution (pulses/mm)	116□ -24-F4-XXX.XXX-XXXHX0X	10	116□ -24-F8-XXX.XXX-XXXHX0X	5	116□ -24-FC-XXX.XXX-XXXHX0X	3.3	116□ -24-R4-XXX.XXX-XXXHX0X	10	01NS10-24-R8-XXX.XXX-XXXHX0X	5	01NS10-24-RC-XXX.XXX-XXXHX0X	3.3	01NS10-24-L8-XXX.XXX-XXXHX0X	5	01NS10-24-LC-XXX.XXX-XXXHX0X	3.3	116□ -24-LG-XXX.XXX-XXXHX0X	2.5
	Model No.	Resolution (pulses/mm)																					
	116□ -24-F4-XXX.XXX-XXXHX0X	10																					
116□ -24-F8-XXX.XXX-XXXHX0X	5																						
116□ -24-FC-XXX.XXX-XXXHX0X	3.3																						
116□ -24-R4-XXX.XXX-XXXHX0X	10																						
01NS10-24-R8-XXX.XXX-XXXHX0X	5																						
01NS10-24-RC-XXX.XXX-XXXHX0X	3.3																						
01NS10-24-L8-XXX.XXX-XXXHX0X	5																						
01NS10-24-LC-XXX.XXX-XXXHX0X	3.3																						
116□ -24-LG-XXX.XXX-XXXHX0X	2.5																						
Black	GND																						

Ordering Key

01NS10 - 24 F4 - 240 - 360 - 4 2 0 H 0 0 0

Motor and spindle type	F4: 3000rpm / 4mm pitch F8: 3000rpm / 8mm pitch FC: 3000rpm / 12mm pitch R4: 4500rpm / 4mm pitch R8: 4500rpm / 8mm pitch RC: 4500rpm / 12mm pitch L8: 6000rpm / 8mm pitch LC: 6000rpm / 12mm pitch LG: 6000rpm / 16mm pitch (Refer to Performance Data)
Retracted length	XXX (Refer to Dimensions)
Extended length	XXX (Refer to Dimensions)
Front connector	2: Drilled hole 3: Metal slot 4: Plastic solid 6: Plastic slot (Refer to Dimensions)
Rear connector	2: Metal (Refer to Dimensions)
Pivot orientation of rear connector	0: 0° (standard) 9: 90° (Refer to Dimensions)
Positioning feedback	0: Without positioning feedback H: Hall effect sensor x 2
Option	0: None P: Mechanical push only extension tube
Reserved	0
Cable	0: 300 mm straight 1: 1000 mm straight 2: 450 mm with 300 mm coiled