

Product Data Sheet

Actuator 01DS40

01DS40 is a compact actuator providing up to 4000N thrust, which is suitable for limited installation space. The motor can be placed on the left or right side according to requirements, and various performance options are also available.



Features and Options

Main applications: Furniture, medical care

Standard features:

- Input voltage: 24V DC
- Max. load: 4000N (Push) / 2000N (Pull)
- Typical speed at no load: 30.3mm/sec
- Typical speed at full load: 4.0mm/sec (4000N load)
- Stroke: 50 ~ 400mm
- Noise level: ≤ 50 dB
- IP level: IP42 (static, non-action)
- Preset limit switches
- Duty cycle: 10%, max. 2 min. continuous operation in 20 min.
- Operating ambient temperature: $-20^{\circ}\text{C} \sim +65^{\circ}\text{C}$
- Storage ambient temperature: $-25^{\circ}\text{C} \sim +65^{\circ}\text{C}$
- Certified: CE Marking, EMC Directive 2014/30/EU
- Mechanical brake

Options:

- Enhanced motor
- Positioning signal feedback with Hall effect sensor x 2
- Mechanical push only extension tube
- PTC thermistor for thermal protection
- Motor position on right side (standard, Fig. 1) or motor position on left side (Fig.2)



Fig.1

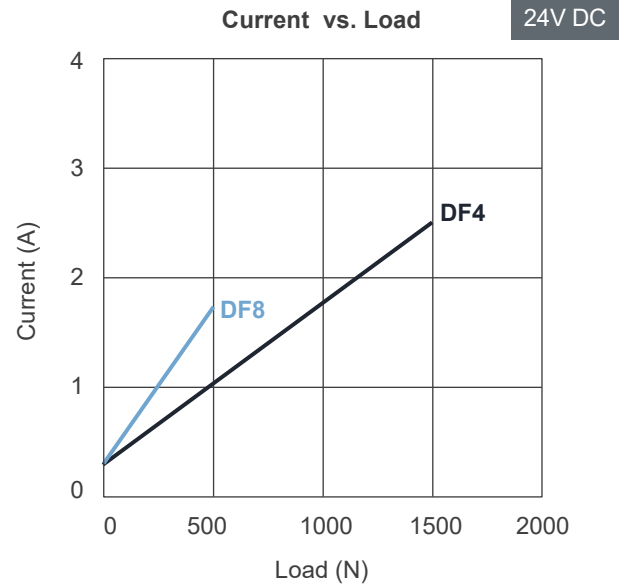
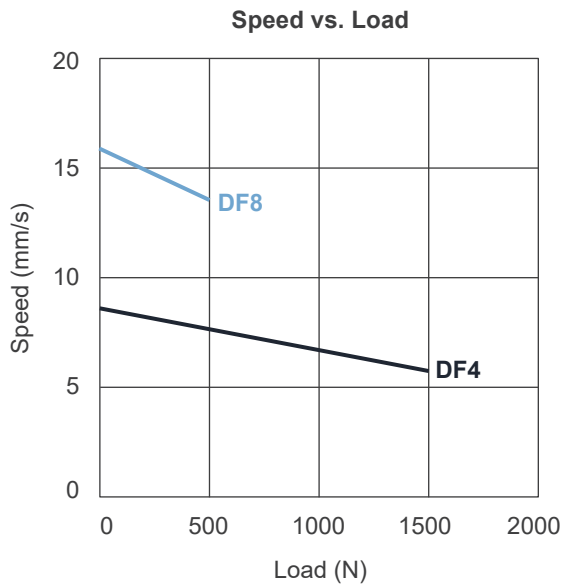


Fig.2

Performance Data

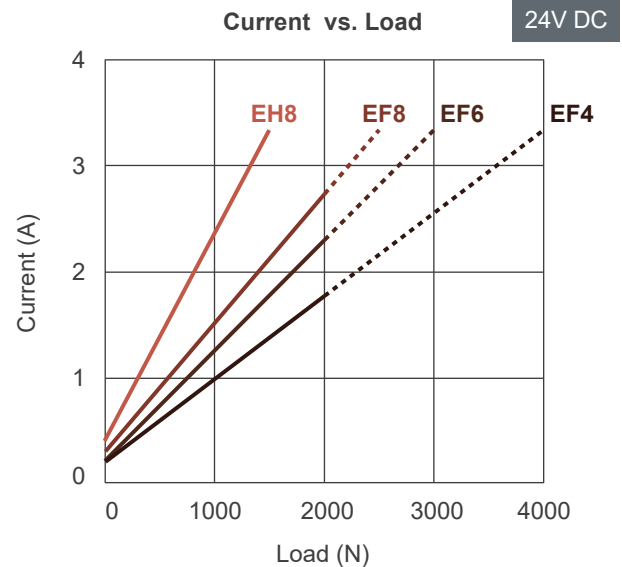
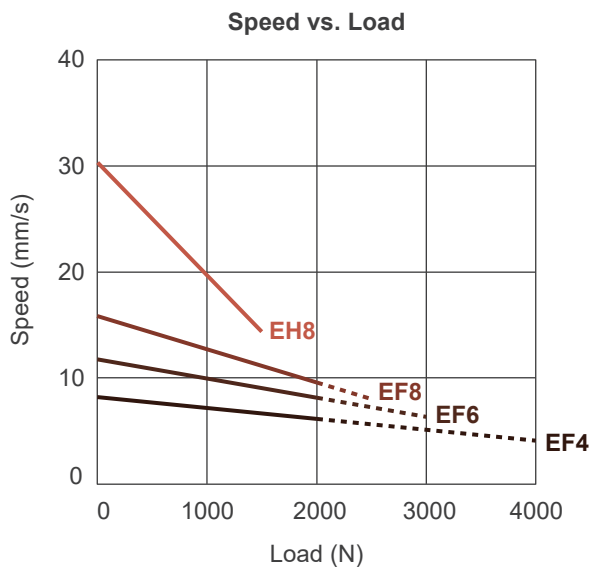
• With default motor

Model No.	Push Max. (N)	Pull Max. (N)	*Typical speed (mm/s)		*Typical current (A)	
			No load	Full load	No load	Full load
01DS40-XXDF4-XXX.XXX-XXXXXXXK	1500	1500	7.7	5.8	0.3	2.5
01DS40-XXDF8-XXX.XXX-XXXXXXXK	500	500	16	13.5	0.3	1.8



• With enhanced motor

Model No.	Push Max. (N)	Pull Max. (N)	*Typical speed (mm/s)		*Typical current (A)	
			No load	Full load	No load	Full load
01DS40-XXEF4-XXX.XXX-XXXXXXXK	4000	2000	8.4	4.0	0.2	3.3
01DS40-XXEF6-XXX.XXX-XXXXXXXK	3000	2000	11.9	6.3	0.2	3.3
01DS40-XXEF8-XXX.XXX-XXXXXXXK	2500	2000	15.9	8.1	0.3	3.3
01DS40-XXEH8-XXX.XXX-XXXXXXXK	1500	1500	30.3	14.3	0.4	3.3



Push / Pull Load — Push Load - - - -

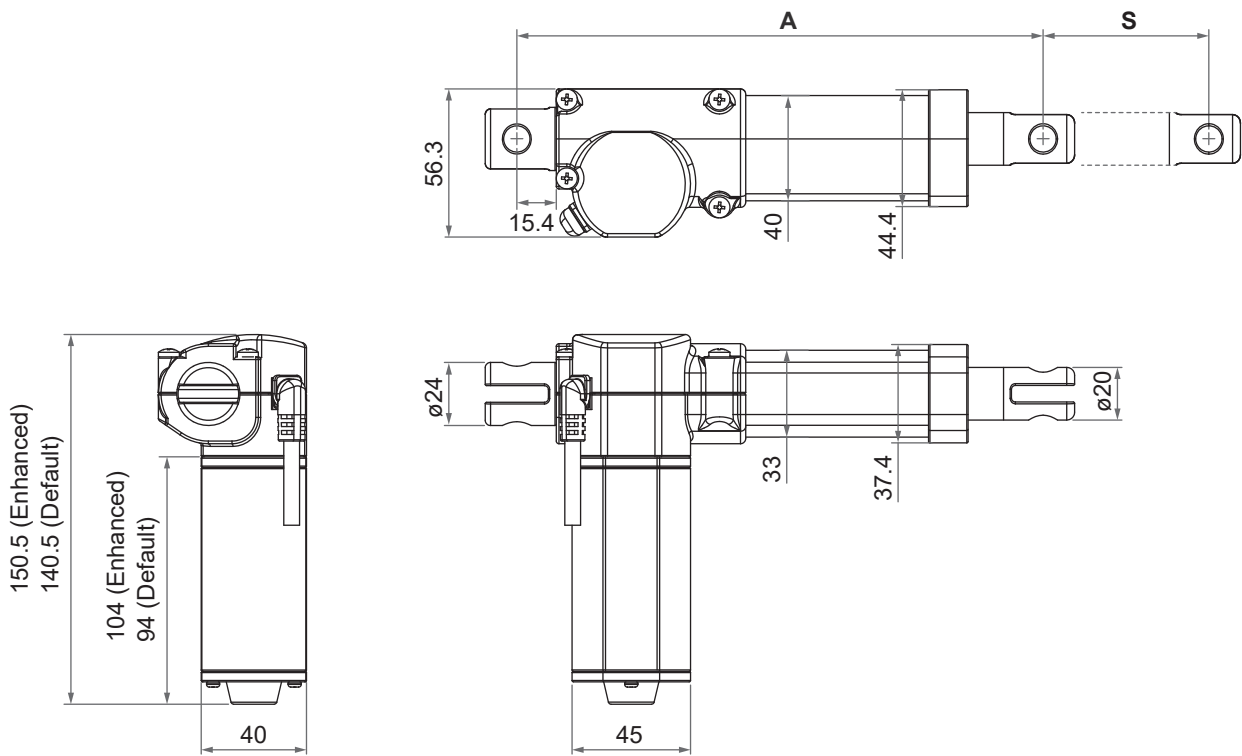
Remarks:

* The typical speed or typical current means the average value neither upper limit nor lower limit. The performance curves are made with typical values.

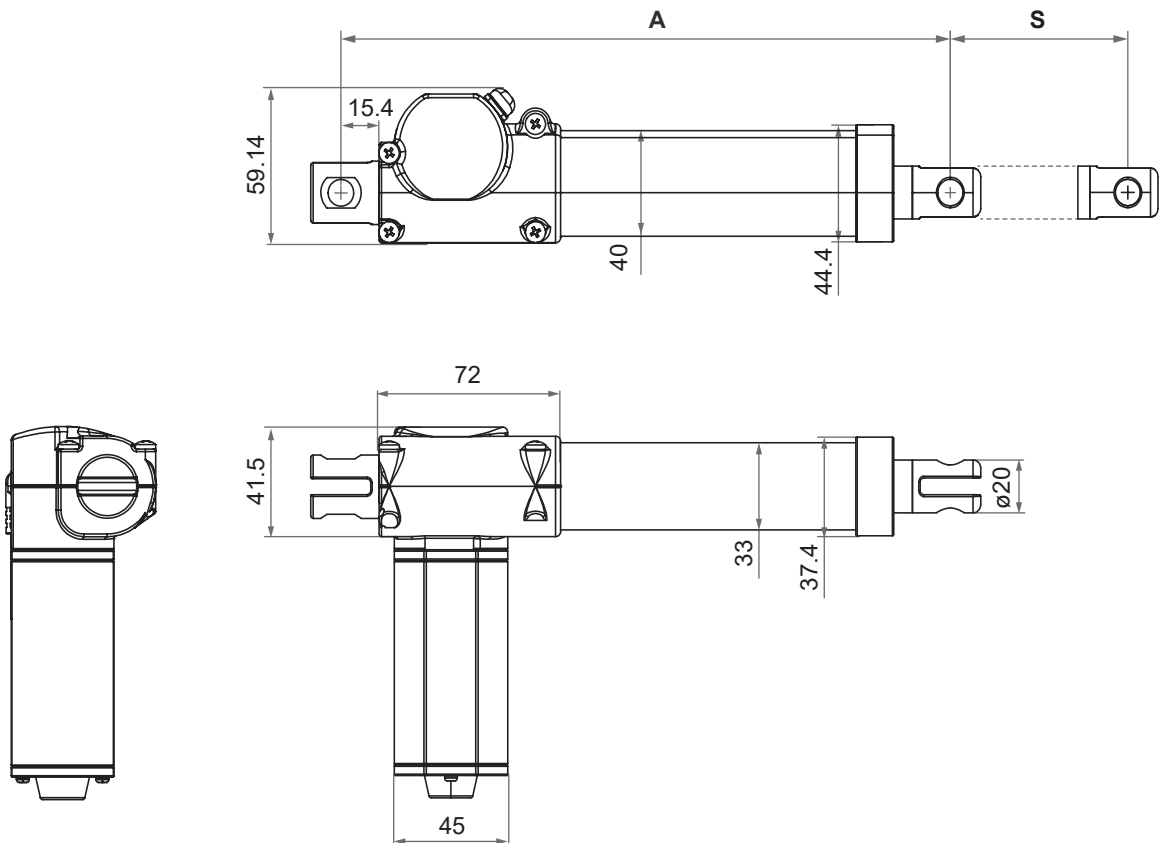
Dimensions

• Motor position on right side

Unit: mm



• Motor position on left side



• Installation Dimension

Front connector code	Stroke (S)			
	≤ 200mm	201~250mm	251~300mm	301~400mm
2	$A \geq S+110\text{mm} (\pm 3\text{mm})$	$A \geq S+120\text{mm} (\pm 3\text{mm})$	$A \geq S+130\text{mm} (\pm 3\text{mm})$	$A \geq S+140\text{mm} (\pm 3\text{mm})$
3, 6	$A \geq S+123\text{mm} (\pm 3\text{mm})$	$A \geq S+133\text{mm} (\pm 3\text{mm})$	$A \geq S+143\text{mm} (\pm 3\text{mm})$	$A \geq S+153\text{mm} (\pm 3\text{mm})$

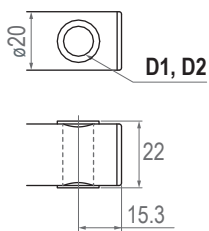
Available stroke (S) range = 50 ~ 400mm

Extended length (B) = S + A, Retracted length (A)

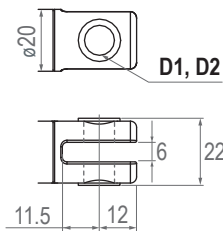
• Front connector

2: Drilled hole

(only for models with max. load ≤ 2000N)

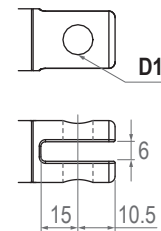


3: Metal slot



6: Plastic slot

(only for models with max. load ≤ 2000N)

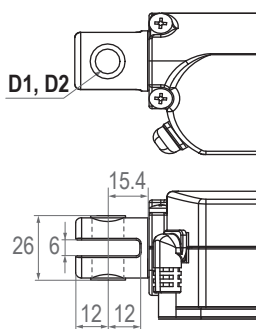


Front connector code	Diameter of pivot without bushing (D1)	Diameter of pivot with bushing (D2)
2	Ø8, Ø10	Ø8
3	Ø8, Ø10	Ø8
6	Ø8, Ø10	N/A

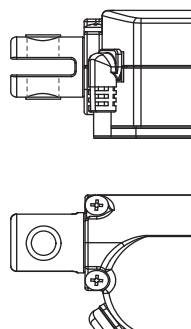
• Rear connector

2: Metal

0: 0° (standard)



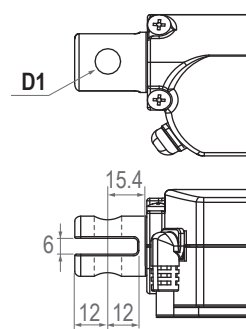
9: 90°



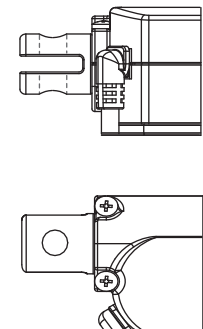
4: Plastic

(only for models with max. load ≤ 2000N)

0: 0° (standard)



9: 90°



Rear connector code	Diameter of pivot without bushing (D1)	Diameter of pivot with bushing (D2)
2	Ø8, Ø10	Ø8
4	Ø8, Ø10	N/A

Compatibility


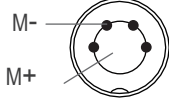
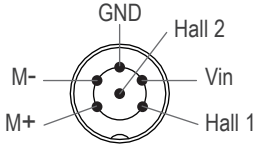

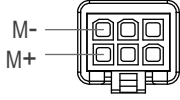
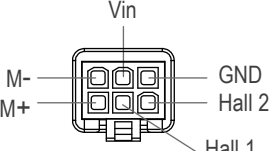
Product	Model	01DS40 spec
Control box	T-control, 01XA1, 01XA2, 01XV3R, 01XV4N, 01XVR2	- Without positioning sensor feedback - With F-type 4-pin DIN plug
	01XD11G, 01XD12G	- Without positioning sensor feedback - With L3-type minifit 6-pin plug
	01RZ2L	- Without positioning sensor feedback - With Direct-Cut cable DL1
	01XV3R-SY, 01XV4N-S, 01XV4N-B	- With dual Hall effect sensors - With F-type 6-pin DIN plug
	01XD11A, 0XD12A	- With dual Hall effect sensors - With L3-type minifit 6-pin plug
Hand control	Depend on control box	- Powered by control box
	01GV, 01ROAK, 01GM02, 01GM02, 01GM03, 01GM04, 01GM05, 01GM06	- With Direct-Cut cable DL1*
Accessory	Power adapter: DPA-58-2920-C8 (formerly TSW1), DPA-87-2930-C6 (formerly TSW3), WPA-29-2910-NA (formerly TSW4), DPA-87-2930-C8 (formerly TSW9)	- With Direct-Cut cable DL1

Remarks:


* The actuator is connected to the hand control through the DL1 cable directly, no control box.

Cable Plug

A. Connecting control devices that provide power

	Without positioning feedback	Positioning feedback with dual Hall effect sensors
 F-type DIN male plug	 4p2c	 6p6c
 L3-type Minifit male plug	 6p2c	 6p6c

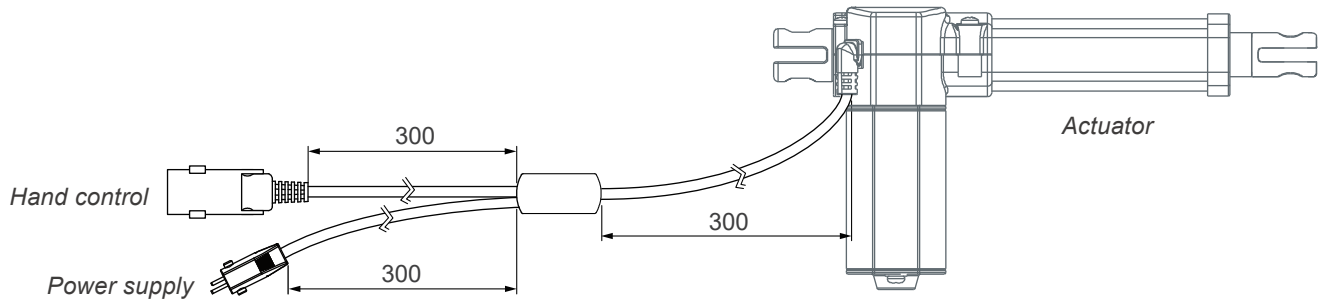
***Note: Pin definition**

	Definition	Descriptions														
Power	M+	Connect M+ to "Vdc +" & M- to "Vdc -" of DC power to extend the actuators. Switch the polarity of DC input to retract it.														
	M-															
Signal	Vin	Voltage input range: 5 ~ 20V														
	Hall 1 output	High= Input - 1.2V (±0.6V) Low= GND Hall signal data: 														
	Hall 2 output	Hall effect sensor resolution: <table border="1" data-bbox="496 1720 1145 2033"> <thead> <tr> <th>Model No.</th> <th>Resolution (pulses/mm)</th> </tr> </thead> <tbody> <tr> <td>01DS40-XXDF4-XXX.XXX-XXXHXXX</td> <td>7.00</td> </tr> <tr> <td>01DS40-XXDF8-XXX.XXX-XXXHXXX</td> <td>3.50</td> </tr> <tr> <td>01DS40-XXEF4-XXX.XXX-XXXHXXX</td> <td>7.00</td> </tr> <tr> <td>01DS40-XXEF6-XXX.XXX-XXXHXXX</td> <td>4.66</td> </tr> <tr> <td>01DS40-XXEF8-XXX.XXX-XXXHXXX</td> <td>3.50</td> </tr> <tr> <td>01DS40-XXEH8-XXX.XXX-XXXHXXX</td> <td>1.75</td> </tr> </tbody> </table>	Model No.	Resolution (pulses/mm)	01DS40-XXDF4-XXX.XXX-XXXHXXX	7.00	01DS40-XXDF8-XXX.XXX-XXXHXXX	3.50	01DS40-XXEF4-XXX.XXX-XXXHXXX	7.00	01DS40-XXEF6-XXX.XXX-XXXHXXX	4.66	01DS40-XXEF8-XXX.XXX-XXXHXXX	3.50	01DS40-XXEH8-XXX.XXX-XXXHXXX	1.75
	Model No.	Resolution (pulses/mm)														
01DS40-XXDF4-XXX.XXX-XXXHXXX	7.00															
01DS40-XXDF8-XXX.XXX-XXXHXXX	3.50															
01DS40-XXEF4-XXX.XXX-XXXHXXX	7.00															
01DS40-XXEF6-XXX.XXX-XXXHXXX	4.66															
01DS40-XXEF8-XXX.XXX-XXXHXXX	3.50															
01DS40-XXEH8-XXX.XXX-XXXHXXX	1.75															
GND																

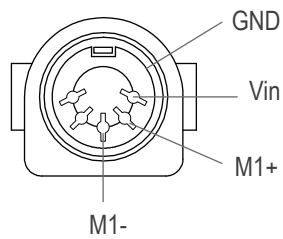
B. Connecting control devices that DO NOT provide power

1. Cable solution

- With direct-cut power cable DL1



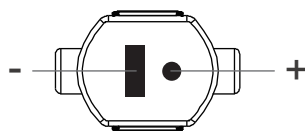
2. Hand control connector: U-type DIN 5-pin female connector



U-type

***Note:** Connect M1+ to "Vdc +" & M1- to "Vdc -" of DC power to extend the M1 actuator. Switch the polarity of DC input to retract it.

3. Power connector: S-type DIN 41529 2-pin male plug



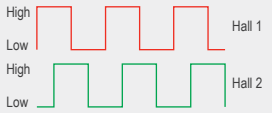
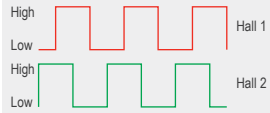
S-type

Wiring with Flying Leads

• Without hall effect sensors

	Wire color	Definition	Comments
Power wires	White	DC power	Connect white wire to "Vdc +" & black wire to "Vdc -" of DC power to extend the actuator. Switch the polarity of DC input to retract it.
	Black		

• With dual hall effect sensors

	Wire color	Definition	Comments														
Power wires	Blue	DC power	Connect blue wire to "Vdc +" & Brown wire to "Vdc -" of DC power to extend the actuator. Switch the polarity of DC input to retract it.														
	Brown																
Signal wires	Yellow	Vin	Voltage input range: 5 ~ 20V														
	Red	Hall 1 output	High= Input - 1.2V (±0.6V) Low= GND Hall signal data: <div style="display: flex; justify-content: space-around; align-items: center;">   </div>														
	Green	Hall 2 output	Hall effect sensor resolution: <table border="1" style="width: 100%; border-collapse: collapse;"> <thead> <tr> <th>Model No.</th> <th>Resolution (pulses/mm)</th> </tr> </thead> <tbody> <tr> <td>01DS40-XXDF4-XXX.XXX-XXXHXXX</td> <td>7.00</td> </tr> <tr> <td>01DS40-XXDF8-XXX.XXX-XXXHXXX</td> <td>3.50</td> </tr> <tr> <td>01DS40-XXEF4-XXX.XXX-XXXHXXX</td> <td>7.00</td> </tr> <tr> <td>01DS40-XXEF6-XXX.XXX-XXXHXXX</td> <td>4.66</td> </tr> <tr> <td>01DS40-XXEF8-XXX.XXX-XXXHXXX</td> <td>3.50</td> </tr> <tr> <td>01DS40-XXEH8-XXX.XXX-XXXHXXX</td> <td>1.75</td> </tr> </tbody> </table>	Model No.	Resolution (pulses/mm)	01DS40-XXDF4-XXX.XXX-XXXHXXX	7.00	01DS40-XXDF8-XXX.XXX-XXXHXXX	3.50	01DS40-XXEF4-XXX.XXX-XXXHXXX	7.00	01DS40-XXEF6-XXX.XXX-XXXHXXX	4.66	01DS40-XXEF8-XXX.XXX-XXXHXXX	3.50	01DS40-XXEH8-XXX.XXX-XXXHXXX	1.75
	Model No.	Resolution (pulses/mm)															
01DS40-XXDF4-XXX.XXX-XXXHXXX	7.00																
01DS40-XXDF8-XXX.XXX-XXXHXXX	3.50																
01DS40-XXEF4-XXX.XXX-XXXHXXX	7.00																
01DS40-XXEF6-XXX.XXX-XXXHXXX	4.66																
01DS40-XXEF8-XXX.XXX-XXXHXXX	3.50																
01DS40-XXEH8-XXX.XXX-XXXHXXX	1.75																
Black	GND																

Ordering Key

01DS40 - 24 E F8 - 190 . 240 - 3 2 0 H 1 R A	
Motor	D: Default motor E: Enhanced motor
Motor and spindle type	F4: 3500rpm / 4mm pitch F6: 3500rpm / 6mm pitch F8: 3500rpm / 8mm pitch H8: 3500rpm / 8mm pitch
Retracted length	XXX (refer to page 4)
Extended length	XXX (refer to page 4)
Front connector	2: Drilled hole (only for models with max. load $\leq 2000\text{N}$) 3: Metal slot 6: Plastic slot (only for models with max. load $\leq 2000\text{N}$)
Rear connector	2: Metal 4: Plastic (only for models with max. load $\leq 2000\text{N}$)
Pivot orientation of rear connector	0: 0° (standard) 9: 90°
Positioning feedback	0: None H: Hall effect sensor x 2
Option	0: None 1: Push only extension tube 2: PTC thermal protection 3: Push only + PTC thermal protection
Motor position	R: Motor position on right side (standard) L: Motor position on left side
Cable	0: 300mm straight 1: 1000mm straight 2: 450mm with 300mm coiled A: Direct-Cut cable DL1, without control box (refer to page 7)