

Product Data Sheet

Actuator 01NJ45

01NJ45 is a compact in-line actuator, which is designed for light load capacity with low current consumption. The concise appearance is suitable for limited installation space such as window opener and other applications in light industry. It also provides solutions for relatively quiet applications that do not require speed.



Features and Options

Main application: Industrial

Standard features:

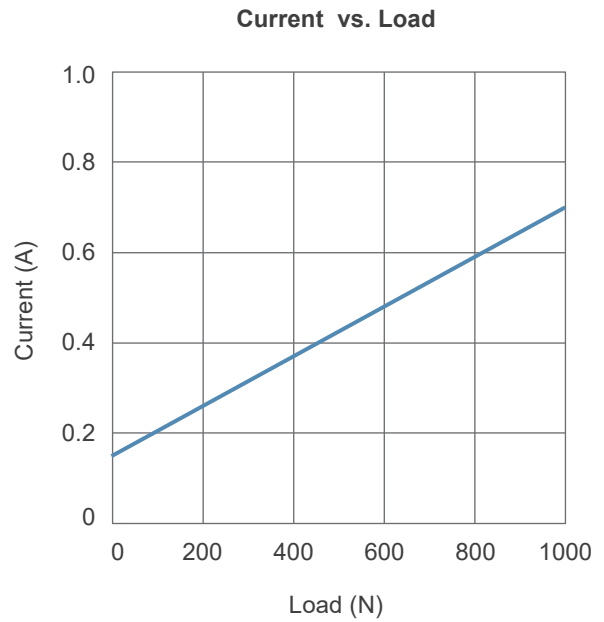
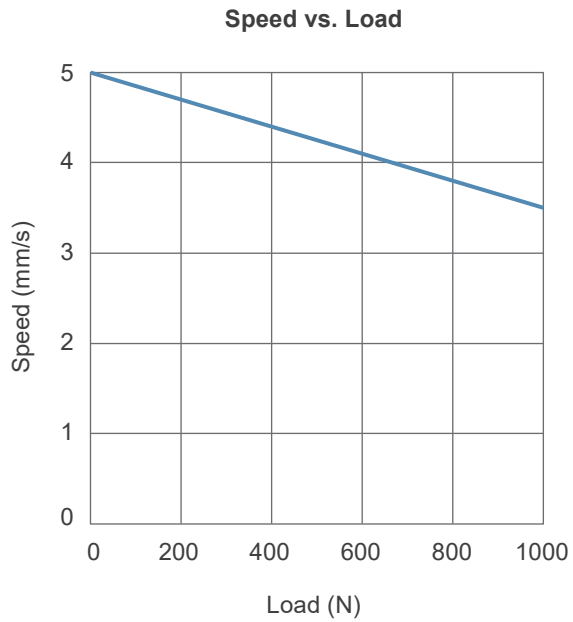
- Input voltage: 24V DC
- Max. Load: 1000N (Push/Pull)
- Max. Static load: 2500N
- Typical speed at no load: 5.0mm/sec
- Typical speed at full load: 3.5mm/sec (1000N Load)
- Stroke: 50 / 100 / 150 / 200 / 250 / 300mm
- Noise level: ≤ 55 dB
- IP Level: IP65
- Preset powerswitches for stroke end limits
- Material: Aluminum tube and case
- Duty cycle: 10%, max. 2 min. continuous operation in 20 min.
- Ambient operation temperature: $-20^{\circ}\text{C} \sim +70^{\circ}\text{C}$
- Certified: CE Marking, EMC Directive 2014/30/EU

Options:

- Mounting bracket MB22 ($\varnothing 8$ mm)

Performance Data

Model No.	Gear ratio	Push / Pull load Max. (N)	*Typical speed (mm/s)		*Typical current (A) @ 24VDC	
			No load	Full load	No load	Full load
01NJ45	57:1	1000	5.0	3.5	0.15	0.7



Remarks:

* The typical speed or typical current means the average value neither upper limit nor lower limit. The performance curves are made with typical values.

Dimensions

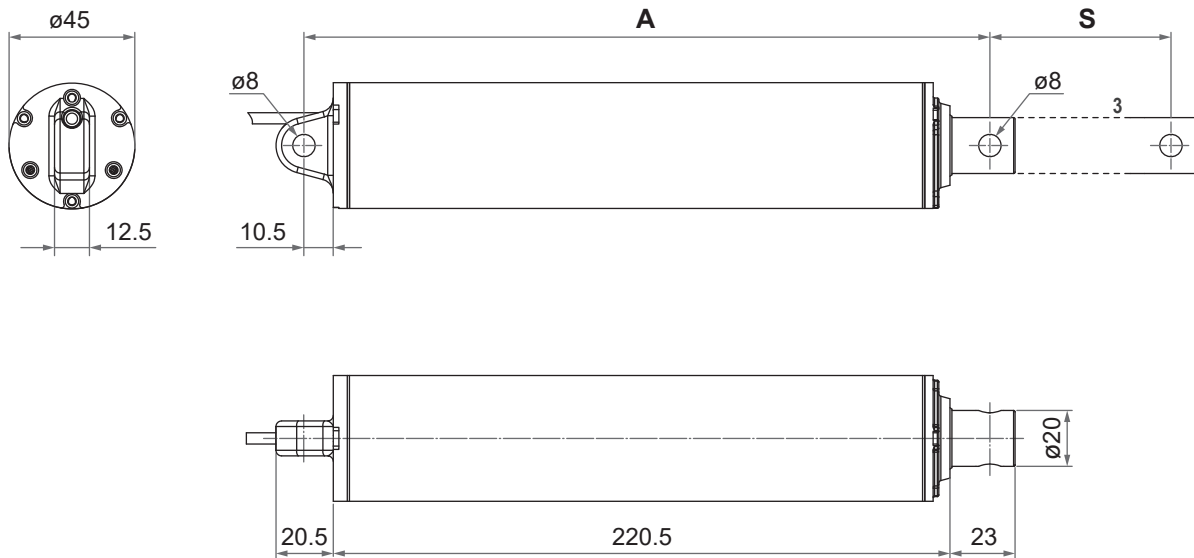
- **Stroke (S):** 50~300mm
- **Installation dimension:** Minimum retracted length(A) of various options;
Extended length = Retracted length(A) + Stroke(S)

Minimum retracted length (A)	Front connector code	Stroke (S)					
		50	100	150	200	250	300
1	1	245	295	345	395	445	495
3	3	286	336	386	436	486	536
6	6	255.5	305.5	355.5	405.5	455.5	505.5

(Tolerance: ±3mm)

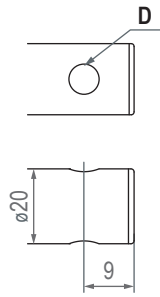
• Drawing

Unit: mm

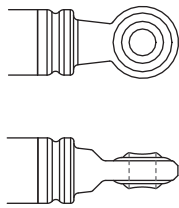


● Front connector

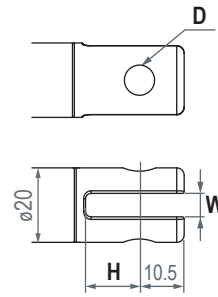
1: Drilled hole



3: Spherical rod eye



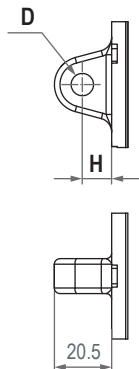
6: Plastic slot



Front connector code	Diameter of pivot without bushing (D)	Slot width (W)	Depth (H)
1	ø6.4, ø8, ø10	N/A	N/A
3	ø8	N/A	N/A
6	ø8, ø10	6	15

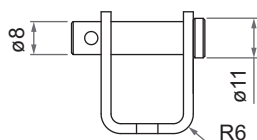
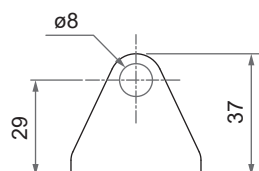
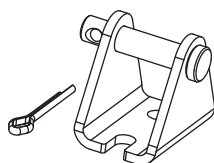
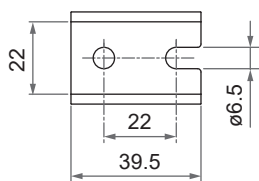
● Rear connector

1: Metal



Rear connector code	Diameter of pivot without bushing (D)	Slot width (W)	Depth (H)
1	ø8	N/A	10.5

● Mounting bracket (MB22)

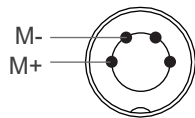


Compatibility

Product	Model	01NJ45 spec
Control box	T-control, 01XA1, 01XA2, 01XVR2, 01XV3R, 01XV4N	F-type DIN plug
	01XD16	Bare wires

Power Cable

• F-type DIN Plug



4-pin DIN Plug

Note: Connect Pin (M+) to "+" & Pin (M-) to "-" of DC power, the actuator will extend.

• Bare wires

Wire color	Definition
Red	M+
Black	M-

Note: Connect red wire (M+) to "+" & black wire (M-) to "-" of DC power, the actuator will extend.



Certifications

The 01NJ45 actuator is compliant with the following regulations, in terms of the essential conformity requirements of EMC Directive of 2014/30/EU.

Emission	Immunity
EN 61000-6-3:2007+A1:2011+AC:2012	EN 61000-6-1:2007 IEC 61000-4-2:2008 IEC 61000-4-3:2006+A1:2007+A2:2010 IEC 61000-4-8:2009

Ordering Key

	01NJ45- 24 K3 - 57 - 100 - 1 1 0 0 0 0 1
Input voltage	24: 24V DC
Motor and Spindle type	K3: 6000rpm, 3mm pitch
Gear ratio	57: 57:1
Stroke	050: 50mm 100: 100mm 150: 150mm 200: 200mm 250: 250mm 300: 300mm
Front connector	1: Drilled hole 3: Spherical rod eye 6: Plastic slot (Refer to page 3)
Rear connector	1: Metal (Refer to page 3)
Reserved	0
Reserved	0
Reserved	0
Mounting bracket (MB22)	0: None 1: Mounting bracket (ø8mm) x 1 2: Mounting bracket (ø8mm) x 2
Cable length	1: 700mm straight 2: 1500mm straight